

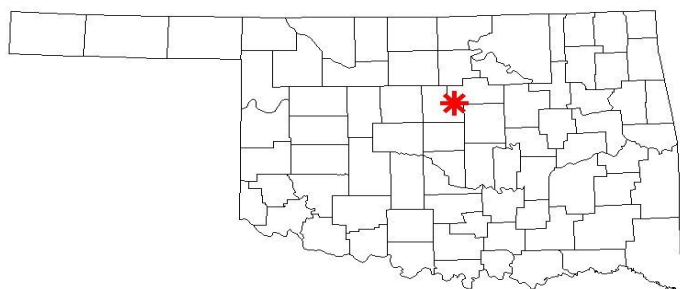
February 2010 Wind Summary

Langston University Regents Tower

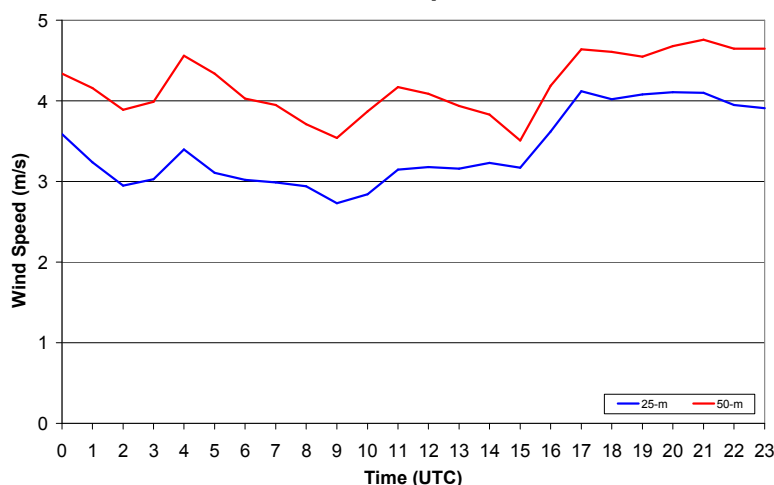
Sensors at 25 and 50 m



Height	Average Wind Speed	Wind Power Density
25 m (82 ft)	3.29 m/s (7.36 mph)	44.4 W/m ²
50 m (164 ft)	4.11 m/s (9.19 mph)	82.3 W/m ²



Diurnal Wind Speed Pattern



No wind direction data available for this month.

BACKGROUND – On April 17, 2003, the Oklahoma Wind Power Initiative (OWPI) installed instruments on the Langston University Regents tower. The install work was funded by the National Renewable Energy Laboratory (NREL) and US DOE's Wind Powering America (WPA) program in cooperation with outreach efforts by the Community Based Renewable Energy Coalition (CBREC) and Langston University to promote development of renewable energy for communities of color.

Diurnal Wind Speed - The average wind speeds for each hour, also known as diurnal wind speeds, are plotted for the month at 25 m and 50 m. The graph shows the variation in wind speeds throughout the day. Typically near the surface wind speeds increase during afternoon heating.

Rose Plot – No rose was created for this month because wind vane data were not available.

Frequency Distribution - The frequency distribution chart can be used in conjunction with a wind turbine power curve to estimate potential energy production. Categories or bins are labeled with the center point and have a width of 1 m/s. For example, the 2.5 m/s bin has a frequency of 20.1%, so wind speeds between 2 and 3 m/s occurred 20.1% of the time.

Frequency Distribution of Wind Speeds at 50 m

